



**Roto pumps**  
since 1968 >>>

WE COMPETE  
WITH ONLY  
ONE PUMP >>>

**Roto pumps**  
since 1968 >>>

## ROTO PUMPS LTD.

### Regd. Off. & Global Headquarters

13, Roto House, Noida Special Economic Zone,  
Noida-201305, UP, India  
Tel: +91 120 2567902-5, Fax: +91 120 2567911  
Email: [contact@rotopumps.com](mailto:contact@rotopumps.com)  
CIN: L28991UP1975PLC004152

### Overseas Establishments

**Roto Pumps Ltd., UK**  
Email: [sales@rotopumps.co.uk](mailto:sales@rotopumps.co.uk)  
Web: [www.rotopumps.co.uk](http://www.rotopumps.co.uk)

**Roto Pumps Ltd., Australia**  
Email: [sales@rotopumps.com.au](mailto:sales@rotopumps.com.au)  
Web: [www.rotopumps.com.au](http://www.rotopumps.com.au)

**Roto Pumps North America Inc.**  
Email: [sales@rotopumps.us](mailto:sales@rotopumps.us)  
Web: [www.rotopumpsna.com](http://www.rotopumpsna.com)

**Roto Pumps MENA FZE**  
Email: [sales.mena@rotopumps.com](mailto:sales.mena@rotopumps.com)  
Web: [www.rotopumps.com](http://www.rotopumps.com)

**Roto Pumps Africa (Pty.) Ltd.**  
Email: [sales@rotopumps.co.za](mailto:sales@rotopumps.co.za)  
Web: [www.rotopumps.co.za](http://www.rotopumps.co.za)

**Roto Pumps GmbH**  
Email: [sales.rpg@rotopumps.com](mailto:sales.rpg@rotopumps.com)  
Web: [www.rotopump.de](http://www.rotopump.de)

**Roto Pumps (Malaysia) Sdn. Bhd.**  
Email: [salesmy@rotopumps.com](mailto:salesmy@rotopumps.com)  
Web: [www.rotopumps.com.my](http://www.rotopumps.com.my)



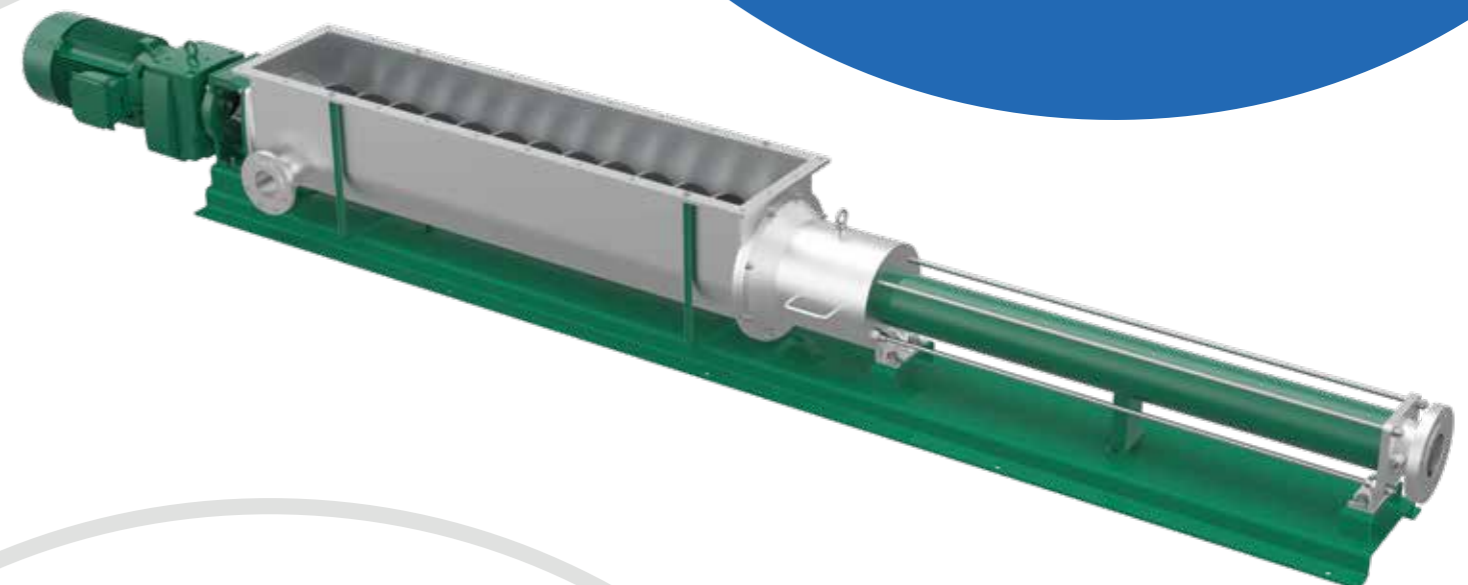
[www.rotopumps.com](http://www.rotopumps.com)



We Handle The Toughest Media

# HEAVY-DUTY CAKE PUMPS

Engineered for Most Challenging  
Sludge Cake Applications



## Roto Cake Pumps

Roto Cake Pumps offer a superior solution for handling highly viscous non-flowable sludge cake with high dry solid contents up to 45%. Featuring a spacious feed hopper, a separate compression zone, an auger feed screw with enlarged diameter & extended pitch, these pumps are ideal for conveying highly viscous media.

### 1. Optimized Rotor & Stator Geometry

Improved Rotor & Stator Geometry minimizes wear due to lower rubbing velocities.

### 2. Unique Thrust Bush Universal Joint

Takes care of dominant thrust loads.

### 3. Large Feed Hopper

Customized to prevent bridging or clogging. Standard hopper sizes are available in 750, 1000, 1500, 2000 mm.

### 4. Sealing Arrangement

Available in Gland Packing & various Mechanical Seal options.

### 5. Compression Zone

Two-Piece Compression Zone with large area offers quick and effortless maintenance.

### 6. Auger

Engineered with thicker blades, a longer pitch, and an increased diameter to ensure efficient and optimal product feeding.

### 7. Flush Connection

For easy emptying & cleaning the feed hopper.

## Performance Summary

**Capacity** - Up to 100 m<sup>3</sup>/hr (440 GPM)

**Pressure** - Up to 24 bar (348 PSI)

## We Move it All

- Centrifuge
- Filter Press
- Belt Press
- Screw Press
- Solar Drying
- Silo Emptying

## Material of Construction

**Rotor** - SS 304/316/410

**Stator** - Available in all grades

**Hopper & Auger** - Mild Steel 304/316

